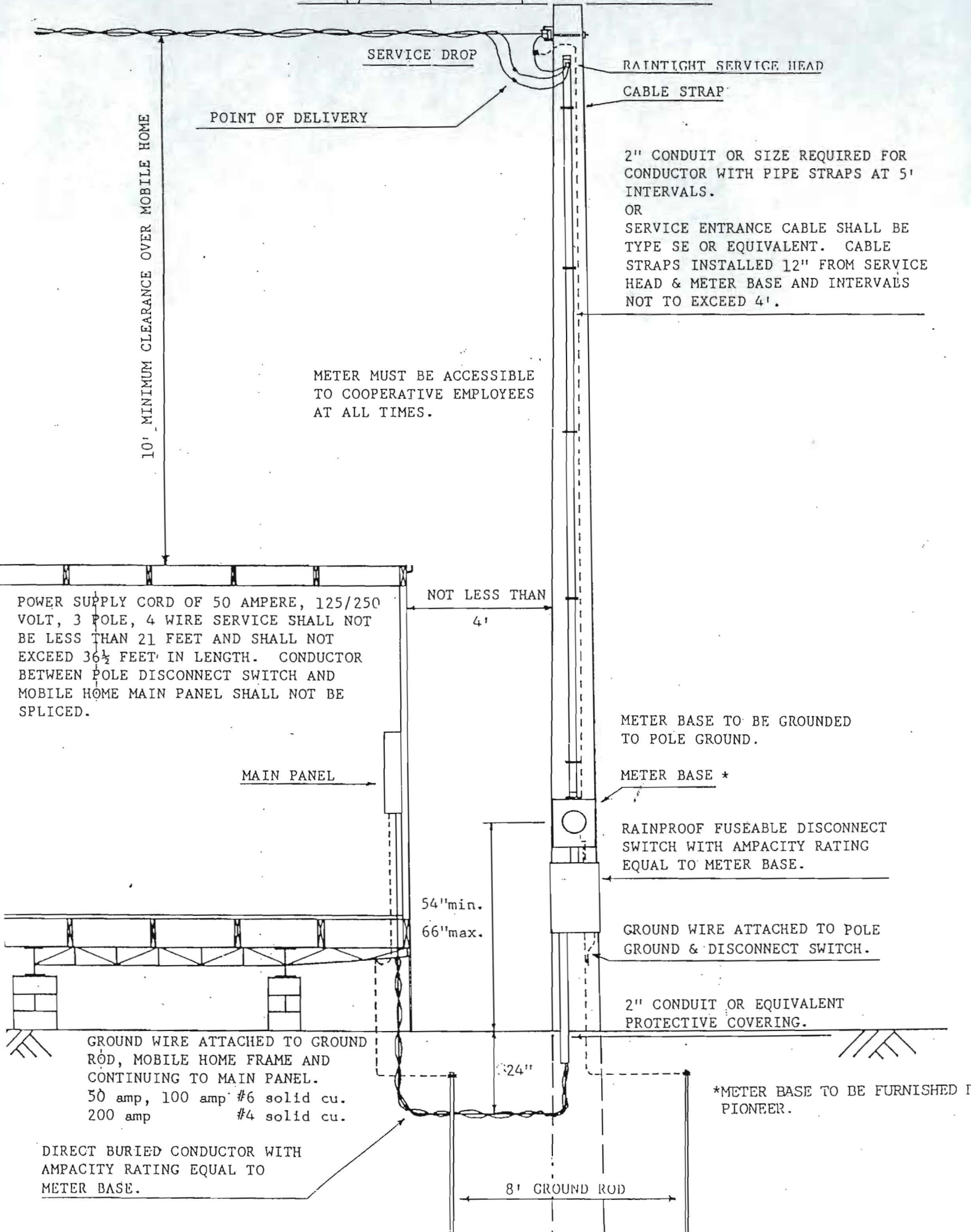


50 amp, 100 amp & 200 amp MOBILE HOME SERVICE



10' MINIMUM CLEARANCE OVER MOBILE HOME

SERVICE DROP

POINT OF DELIVERY

RAINTIGHT SERVICE HEAD

CABLE STRAP

2" CONDUIT OR SIZE REQUIRED FOR CONDUCTOR WITH PIPE STRAPS AT 5' INTERVALS.

OR SERVICE ENTRANCE CABLE SHALL BE TYPE SE OR EQUIVALENT. CABLE STRAPS INSTALLED 12" FROM SERVICE HEAD & METER BASE AND INTERVALS NOT TO EXCEED 4'.

METER MUST BE ACCESSIBLE TO COOPERATIVE EMPLOYEES AT ALL TIMES.

POWER SUPPLY CORD OF 50 AMPERE, 125/250 VOLT, 3 POLE, 4 WIRE SERVICE SHALL NOT BE LESS THAN 21 FEET AND SHALL NOT EXCEED 36 1/2 FEET IN LENGTH. CONDUCTOR BETWEEN POLE DISCONNECT SWITCH AND MOBILE HOME MAIN PANEL SHALL NOT BE SPLICED.

NOT LESS THAN 4'

MAIN PANEL

METER BASE TO BE GROUNDED TO POLE GROUND.

METER BASE \*

RAINPROOF FUSEABLE DISCONNECT SWITCH WITH AMPACITY RATING EQUAL TO METER BASE.

54"min.  
66"max.

GROUND WIRE ATTACHED TO POLE GROUND & DISCONNECT SWITCH.

2" CONDUIT OR EQUIVALENT PROTECTIVE COVERING.

GROUND WIRE ATTACHED TO GROUND ROD, MOBILE HOME FRAME AND CONTINUING TO MAIN PANEL.  
50 amp, 100 amp #6 solid cu.  
200 amp #4 solid cu.

DIRECT BURIED CONDUCTOR WITH AMPACITY RATING EQUAL TO METER BASE.

\*METER BASE TO BE FURNISHED BY PIONEER.

8' GROUND ROD